

# SECTION OP-52A: AERO LEDS

## SUN SPOT LX

Refer to the AeroLEDs installation instructions for more information.

Step 1: Fabricate four W-00021 Spacers from .058X5/16 6061-T6 TUBE as shown in Figure 1.

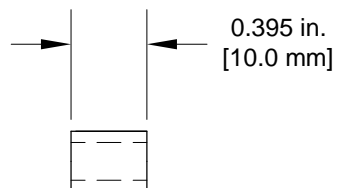
Step 2: Remove the tabs from the W-00016B AeroLEDs Sun Spot LX Bracket as shown in Figure 2. Radius any sharp corners.

Step 3: Deburr the slots in the bracket to allow an AN3 bolt to slide easily within the slot.

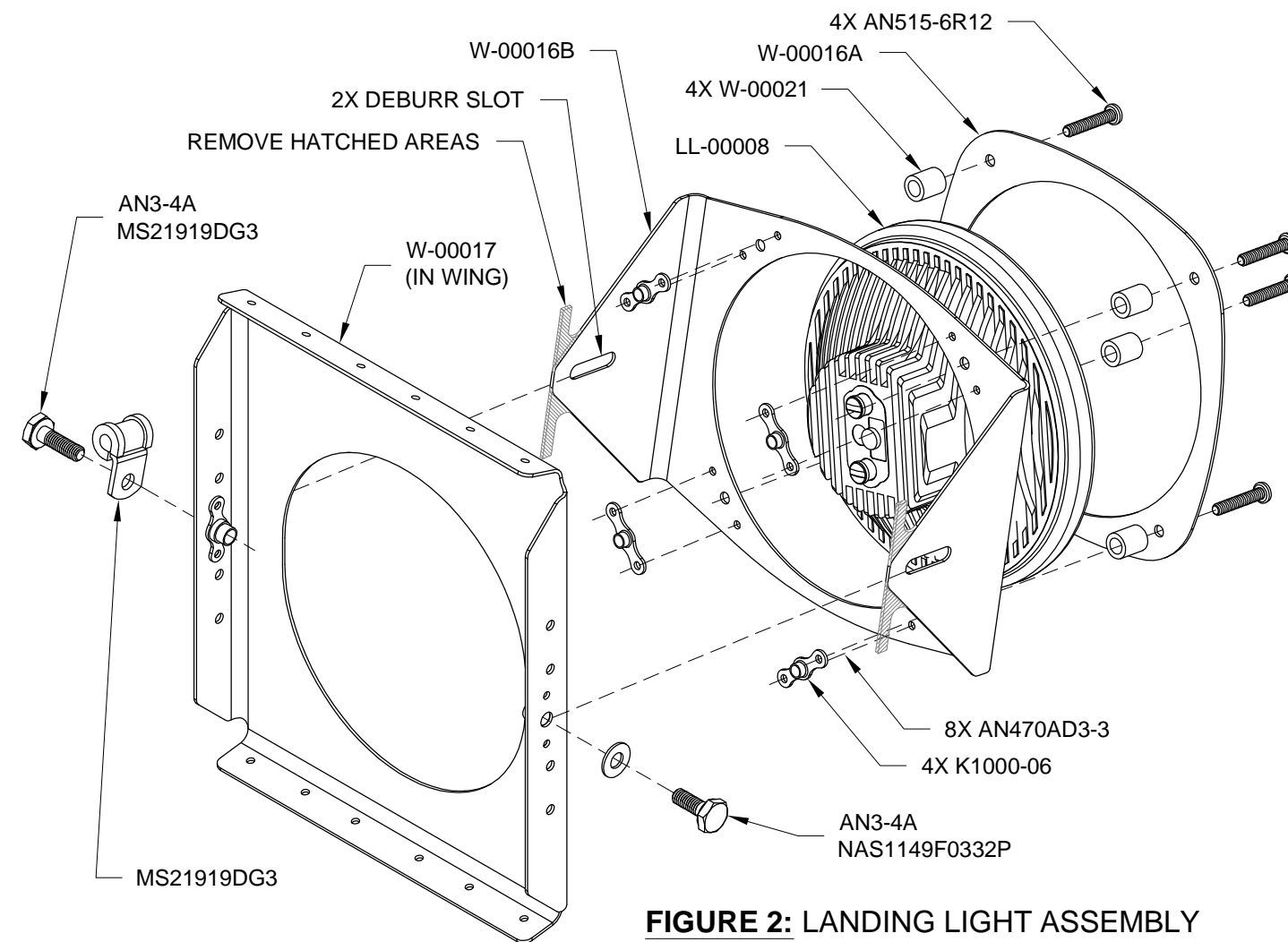
Step 4: Rivet the nutplates to the bracket as shown in Figure 2.

Step 5: Prime and/or paint the spacers, bracket, and W-00016A Retainer Ring as desired.

Step 6: Assemble the Landing Light Assembly as shown in Figure 2, but do not install it in the wing yet.



**FIGURE 1: SPACER TEMPLATE**  
(CHECK PRINTED SCALE 1:1 PER SECTION 3 BEFORE USING THE TEMPLATE!)



**FIGURE 2: LANDING LIGHT ASSEMBLY AND INSTALLATION**

10 9/16  
[268.3 mm]



**NOTE:** See Section 5.21 for more information on wire stripping and closed barrel terminals.

**NOTE:** For Steps 1-10, refer to Figure 1.

**NOTE:** The Landing Light and Wing Tip Nav Lights are grounded to the fuselage via the L418 (YEL) wire and the P2176 (BLK) wire in the WH-00125 RV-14 Common Fuselage Wiring Harness (installed later). This grounding location was chosen to minimize electromagnetic interference with wing mounted ADAHRS and Magnetometers. See Figure 3.

**Step 1:** Strip the ends of the L422 (BLK), L417 (RED), and L418 (YEL) wires.

**Step 2:** (ONLY if Wing Tip Nav Strobe Lights **WILL NOT BE INSTALLED.**) Crimp an ES 302559 Butt Splice onto the L422 (BLK) wire.

**Step 3:** Crimp the ring terminals onto the wires stripped in Step 1.

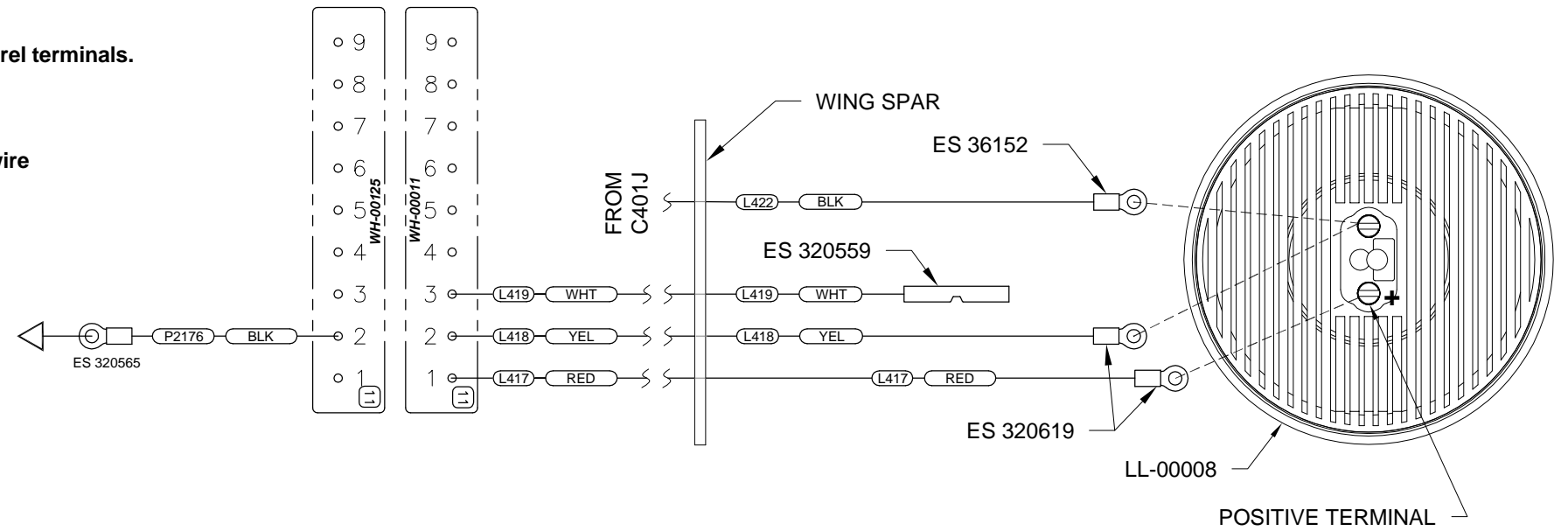
**Step 4:** Connect the ring terminals to the terminals on the LL-00008 AeroLED Sun Spot LX.

**Step 5:** Crimp the butt splice onto the end of the L419 (WHT) wire. It is not necessary to strip this wire.

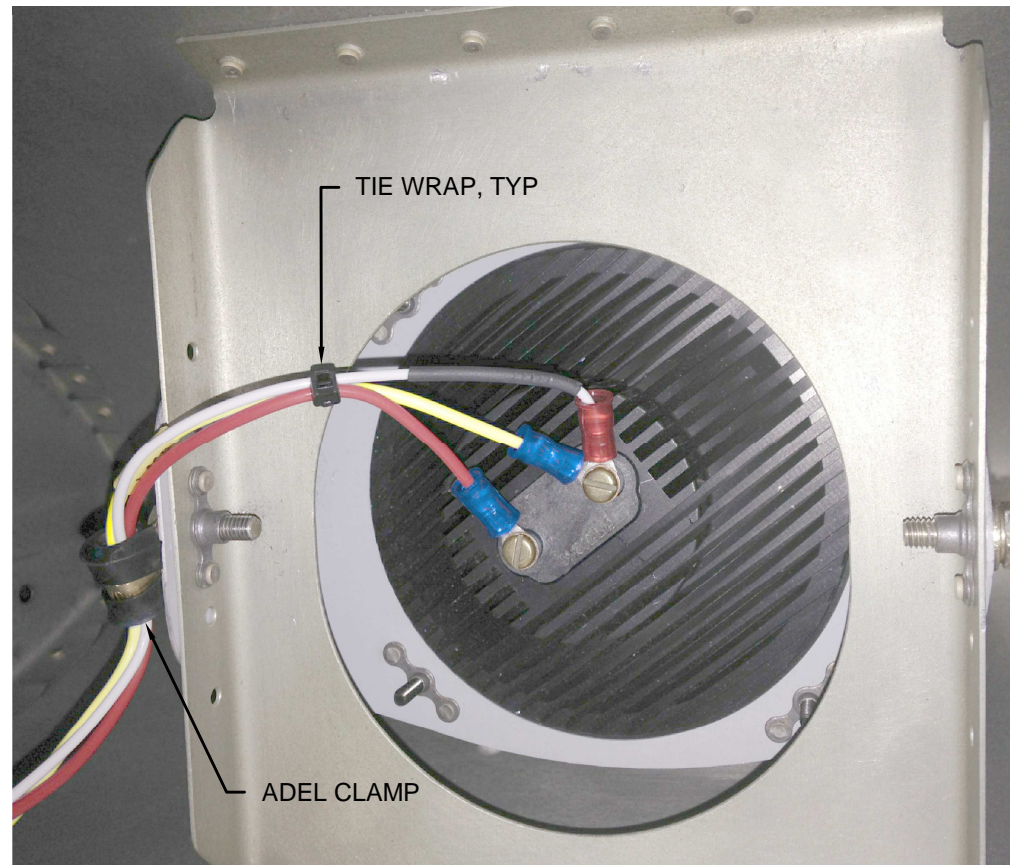
**Step 6:** Install the Landing Light Assembly into the wing as shown on Page OP52A-02, Figure 2. Use caution to avoid overtightening the screws.

**Step 7:** Secure the wires and butt splice using the adel clamp and tie wraps as necessary so the wires do not contact the lower wing skin. See Figure 2.

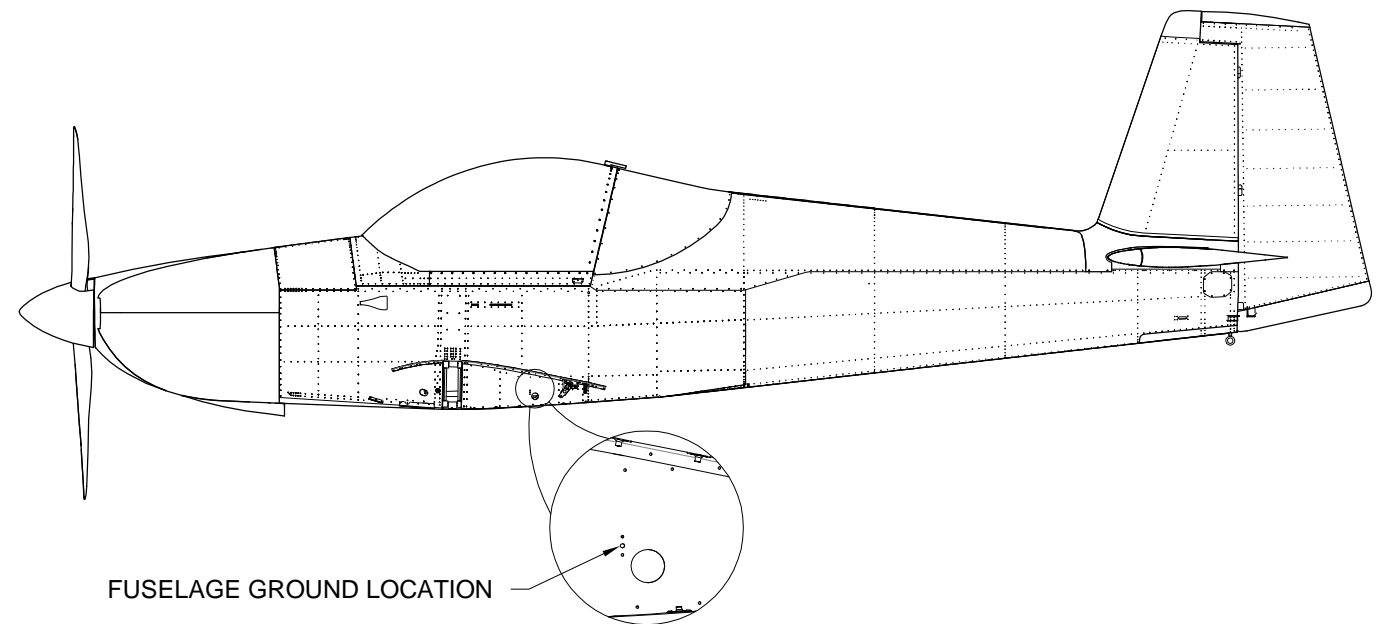
**WARNING:** Do not test the landing lights without temporarily grounding the appropriate ground wires!



**FIGURE 1: WIRING**



**FIGURE 2: SECURE LANDING LIGHT WIRES**



**FIGURE 3: GROUND LOCATION**